

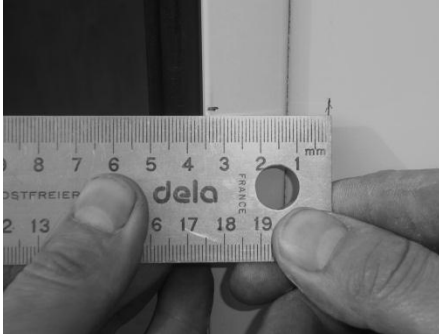
# Fitting method for Compartment and Driver Door Lock



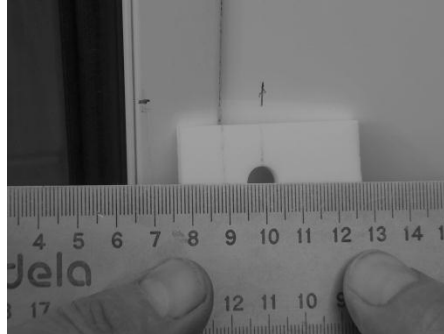
1 – Measure Dimension A  
(in this case, 50 mm)



2 – Transfer the resulting  
Dimension A to the exterior



3 – Check that the minimum dimensions of 5 mm and 22 mm are observed (in this case, 12 mm and 36 mm = OK)



4 – Cut the Teflon Spacer to the dimension determined previously (in this case, 12 mm)



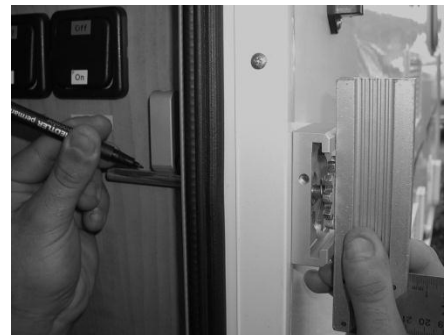
5 – Mark and drill three holes of  
Ø 9 mm



6 – Fitting of the Base



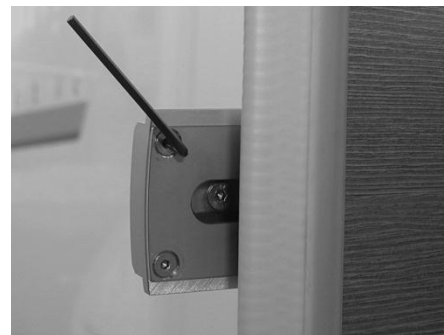
7 – With the Pinion and loose Spring in place, tighten Screws permanently



8 – With the Pinion aligned to the front, determine the length of the shank: this must not be too short



9 – Fit the slide in place by pushing on the Pinion



10 – Fit the slide, followed by the Stainless Steel Plate

11: Permanently secure the Crank: Upper position = Lock open, Lower position = Lock closed